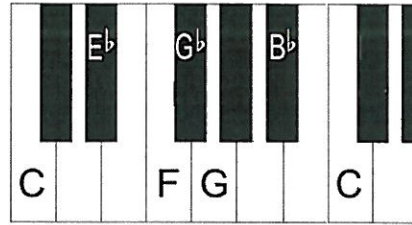


Improvising with The 12-Bar Blues

- RH will improvise using the C Blues Scale.

C Blues Scale



- LH will play the 12-Bar Blues pattern below.

C	C	C	C
F	F	C	C
G	F	C	C

LH Accompaniment Patterns

Single Notes:



Blocked Fifths:



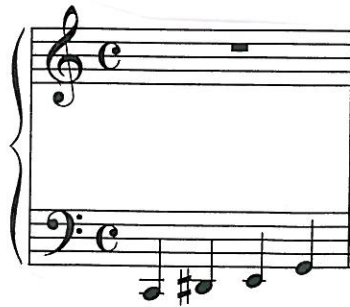
Train:



Boogie:



Walking Bass:



Boogie-Woogie (swing the 8ths!)

